



Term 6 Week 2 Newsletter 2024

Dear Families,

Welcome back to Term 6! We have had a busy start to the term with NSPCC assemblies about how to stay safe and who to talk to if anyone is feeling upset or worried about anything. Please do talk with your child about this too and your child's class teacher know if you have any concerns.

During STEM Week last week, all classes enjoyed a range of investigations - you can see the learning in each class below. Thank you very much to Miss Blackwell and Ms Krijnauw for organising a great week! The next opportunity for families to come in to school is for the Art Week Showcase on Friday, 12th July (please see diary dates and more information below).

As we enjoy the final term, please ensure your child continues to come to school in appropriate uniform and footwear (see below for full details). Children should come to school in their PE kit and trainers/plimsolls if they have PE that day or Forest School clothes (Year 2 on Tuesdays and Year 4 on Thursdays). Children should wear their usual black or blue school shoes/trainers at all other times

although sandals are permitted in the summer months. If you are unsure, please do speak with me at the school gates. Thank you.

As the weather is so changeable at the moment, please ensure your child comes to school with a warm (preferably waterproof) coat, clearly labelled, each day, in addition to a sunhat. Wellies may also be needed depending upon the weather forecast. By having appropriate clothing in school, it helps everyone to enjoy the outdoors at break and lunchtimes, outdoor learning time and the Daily Mile. Please do let me know if you need any support in sourcing coats, wellies or sunhats.

If it is a sunny day, please apply suncream to your child at home before the school day as children are not permitted to bring suncream into school. Thank you.

We are experiencing a high number of children and adults buzzing at the black gate for entry before 8.35am, to gain entry onto the field. **Please be aware that the black gate opens at 8.35am and will not be opened before unless a visitor needs to gain entry to the school, for example supply staff.** If children walk to school unaccompanied by parents/carers, please be aware the children are not supervised until 8.40am when staff are on duty and the white and green gates open.

Reminder: Due to an issue a National Trust booking, Year 1 are only able to visit Bodiam Castle on Thursday, 4th July. My sincere apologies but this means that we have had to move Sports Day to the following week, Thursday, 11th July. I have made these amendments in the calendar but please ensure you take note of the new date.

Reminder: We are working with contractors to fit a sink area in the new art space (Gallery area) - there have been some delays with this due to plumbing issues. I will let you know as soon as these are resolved. You may have seen the wooden pergola is being dismantled due to the roof being rotten and base floor being incredibly slippery. We are looking to build an outdoor classroom and renovate the bike/scooter shed area. We are also looking to fit grid matting in the grassy area in the Key Stage 2 area to create a reading area, along with the incredible WRS chair that was kindly made by Josh (parent in Year 5). **Please do let me know if you would be able to help with the projects!**

Best wishes,

Irèna Wooler

Headteacher

School Calendar



Items added or changed from the previous newsletter will be in italic:

Tuesday, 18th June

Year 2 Forest School

Year 3/4 Football festival (morning, details to be confirmed)

Year 3/4 Swimming

Wednesday, 19th June

9am Celebration Assembly

Thursday, 20th June

Year 4 Forest School

Monday, 24th June

Art Week begins

Tuesday, 25th June

Year 2 Forest School

Year 3/4 Swimming

Thursday, 27th June

Year 4 Forest School

Year 6 PATINA artist in school all day

Friday, 28th June

Year 5 - Table Talk session

District Sports (details to be confirmed)

Monday, 1st July

Additional Year 6 Priory taster day (by invitation)

Year 6 King's Academy taster day

EYFS trip to Saltdean beach (letter sent out 12.06.2024)

Year 2 walk to River Ouse (letter sent out 11.06.2024)

Tuesday, 2nd July

Year 3/4 Swimming

Year 6 Taster day at Priory

Year 6 King's Academy taster day

Wednesday, 3rd July

9.15am EYFS September 2024 Parents' Welcome Meeting

STEM Ambassador visiting Year 5

Year 6 - Patina artist in school all day

Year 3 trip to the Natural History Museum

Thursday, 4th July

Year 1 Bodiam Castle (Sports Day moved to 11th July due to Year 1 trip)

Friday, 5th July

Year 6 Patina parade - leaving school at 10.45am

Tuesday, 9th July

Year 2 Forest School - final session

Year 3/4 Swimming

1.30pm - 2.30pm EYFS September 2024 Come and Play session

Wednesday, 10th July

9am Celebration Assembly (*final one of the academic year*)

1.30pm - 2.30pm EYFS September 2024 Come and Play session

Thursday, 11th July

Sports Day (change due to Year 1 trip)

Picnic lunch on field - children are allowed to go home with their families after lunch

Friday, 12th July

9.00 Whole school Assembly with the Mayor

2pm Parent Forum

3.00pm - 3.30pm Art Showcase in Hall - *all welcome*

Monday, 15th July

Year 6 Dress Rehearsal to the school

Transition session with new teachers/classrooms

Choir Club performance (*3.30pm, email sent 11.06.2024*)

Tuesday, 16th July

Year 3/4 Swimming - final session

Thursday, 18th July

5.30pm (6pm start) Year 6 Play to families

Year 4 Forest School

Friday, 19th July

Transition session with new teachers/classrooms

Monday, 22nd July

NO AFTER-SCHOOL CLUBS RUNNING THIS WEEK APART FROM JO TAYLOR DRAMA CLUB (MONDAY)

4pm - 4.15pm - Jo Taylor Drama Club performance to families

Tuesday, 23rd July

9.15am Year 6 Leavers' Assembly

1.15pm End of Term 6, start of Summer Holidays

Monday, 2nd September

INSET 1 - school closed

Tuesday, 3rd September

INSET 2 - school closed

Wednesday, 4th September

Start of Term 1

Wednesday, 6th November

INSET 3 - school closed (INSET day in middle of the week due to Lewes Bonfire Night celebrations on Tuesday, 5th November)

Monday, 6th January 2025

Monday, 2nd June 2025

INSET 5 - school closed

Staffing Update



I am very pleased to confirm the class teachers for next academic year as below and I will share information about where the teaching assistants will be as soon as possible:

EYFS (Silver Birch) Carla Jones (3 days) and Bronwen Ferber (2 days)

Year 1 (Elm Class) Janine Bishop (4 days) and Alice Bracher (1 day)

Year 2 (Cherry Class) Hannah Blackwell (5 days)

Year 3 (Larch Class) Sarah Sakaki (5 days)

Year 4 (Willow Class) Margie Krijnauw (4 days) and Alice Bracher (1 day)

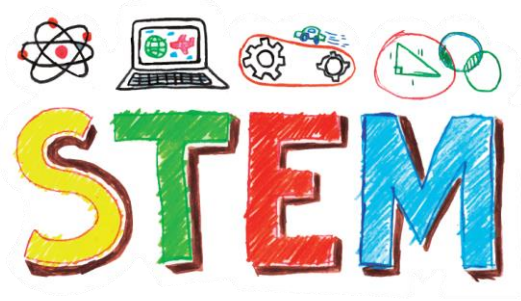
Year 5 (Elder Class) Rachel Callow (3 days including PPA time) and Rea Hamilton (2.5 days)

Year 6 (Oak Class) *to be confirmed as soon as recruitment process is completed*

It is with great sadness that Ms Knight and Lupin will be leaving Western Road at the end of this term. Ms Knight has made a significant contribution to the school as the Year 6 class teacher, ensuring the children have a successful final year of primary school and are ready for Year 7 alongside leading Computing and PE (jointly with Mrs Sakaki). Ms Knight's abundance of energy and passion have meant

the children have thrived in her care. Lupin has helped to make everyone smile, with his joyful, wagging tail and love and care for all the children and staff. Ms Knight and Lupin will be greatly missed and we wish them every success in the future.

STEM Week 2024



News from Miss Blackwell and Ms Krijnauw:

Our first week back for Term 6 was STEM week. We started the week with an exciting assembly talking about what science is and who is a scientist. We came to the conclusion that everyone who has ever asked a question is a scientist which meant that every person in the room was! The children were engaged and enthusiastic from the beginning. The whole school completed the same experiments, which were slightly adapted for each year group, based on the theme 'time'. We looked at things changing over time, how we tell the time and how long something takes to happen.

Our first experiment was the biscuit dunking challenge! The children had a range of biscuits which they dunked in to water and pulled back out. They repeated this until the biscuit broke to see which biscuit had the best dunkability! Each class presented their data in a different way and showed their results during a whole school assembly. We concluded that a rich tea biscuit is the best for dunking!

We then set up an experiment to observe over time. We put some white carnations in to food colouring and made predictions on what would happen. We are still waiting and observing to see what will happen.

The children all looked in to how we tell the time using clocks and discussed how people could tell the time before we even had clocks! It was lovely to see the children getting outside to create their own sundials either using chalk and shadows or making a more accurate sundial on paper.

Finally the children in KS1 all made zip wires and KS2 tested balloon rockets. They came up with their own investigations such as what will happen if I make the toy heavier? Will it make a difference if I use a different material for the string? Will it go quicker if I change the angle of the string? And tested them.

Overall we had a great STEM week with lots of questions being asked and investigated! The children were very excited to become scientists for the week and have even showed us how they have tried some of our experiments at home. Thank you to everyone who was able to make our STEM showcase for each year group. The children really enjoyed showing off what they had been learning all week.

Silver Birch (EYFS)



We really enjoyed STEM week at the beginning of this term. One of our favourite experiments was to make a harness for a toy and see how fast it could travel down the zip line.

We considered the following questions.....

Would the character move faster or slower on different types of material?

Would the character move faster if it was heavy?

Would the character move faster if the zip line was steeper?

This term we have started to investigate capacity. We are using the vocabulary of full, empty, nearly full, nearly empty and half full and half empty.

We are now moving on to exploring how different sized containers may hold more or less depending on their shape.

Elm Class (Year 1)



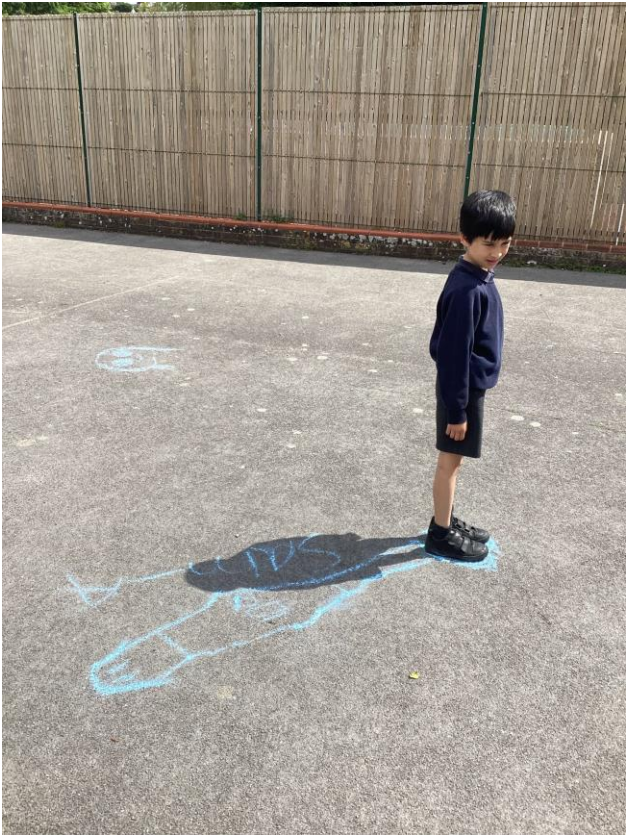






Cherry Class (Year 2)





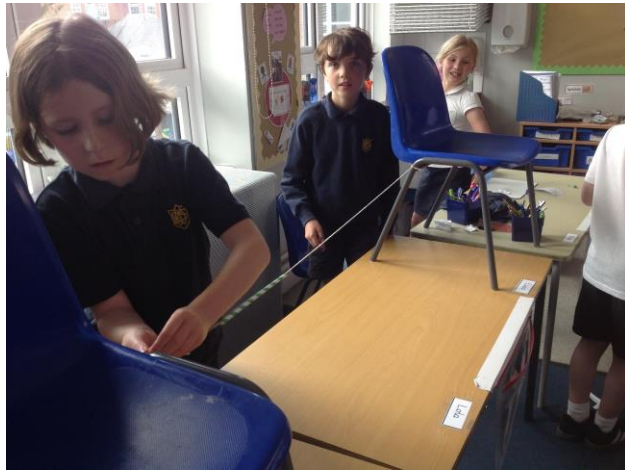


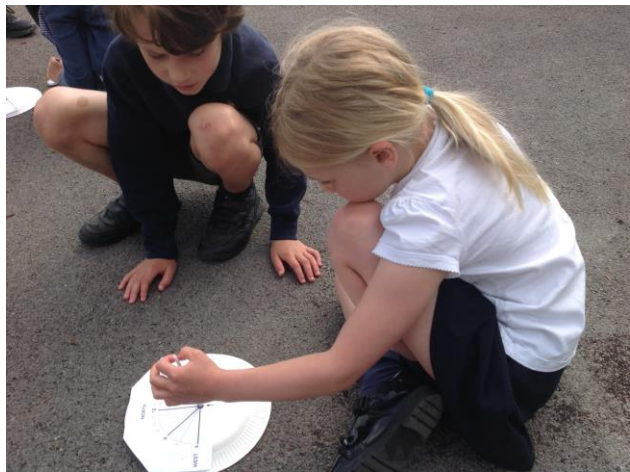




Larch Class (Year 3)









Willow Class (Year 4)



What is the best biscuit for dunking?

We all love biscuits just as much as we love a good cup of tea. They are the perfect duo. To determine the best biscuit for dunking, the Year 4 team put the most classic biccies to test.

Results

Nice

Dunkability - Very Poor

Supposedly a "crisp" biscuit, the results were pretty shocking taking just a few dunks before the Nice biscuit fell to pieces.

Malted Milk

Dunkability – Poor

The Malted Milk is described as "light and crumbly", and that it really is. Another not-so-great dunker.

Ginger Nut

Dunkability - Average

Who doesn't love a good ginger biscuit? We had relatively high hopes for its survival once dunked. Unfortunately, we were too hopeful. The ginger nut biscuit did not last many dunks.

Digestive

Dunkability - Above Average

The Digestive...Yep, we had pretty high expectations for this King of the biccie tin. It did well, just not as well as we had thought! Even so, the Original Digestive continues to make a good dunk.

McVitie's Rich Tea

Dunkability - Out of this world

The Rich Tea biscuit certainly pulled through! With an astonishing level of dunkability, this biscuit kept its shape even through the soggiest of dunks. This is one absorbent biscuit. We'd put this down to its compact structure helping to support great levels of moisture.

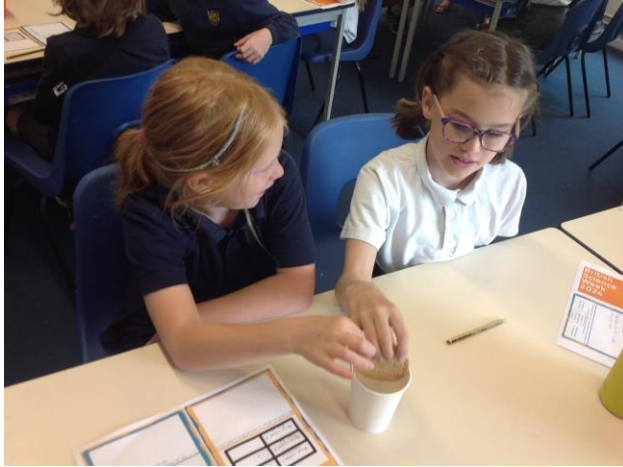
What factors might influence dunkability?

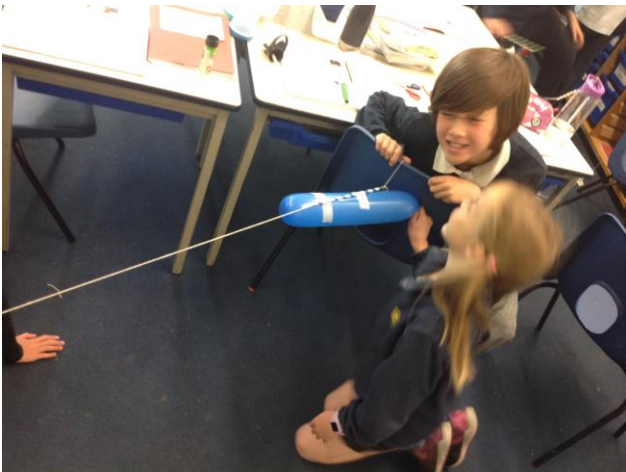
We thought of a list:

- time spent in the oven
- sugar content
- shape of the biscuits
- sponginess of the biscuits
- weight of the biscuits

The science behind dunkability:

When dunked, the fat and sugar quickly dissolve into the drink; the starch also soaks up liquid, and so the biscuit softens and expands slightly. The liquid tracks upwards through the biscuit like rising damp until eventually the biscuit softens to the point that it rips apart under its own weight.













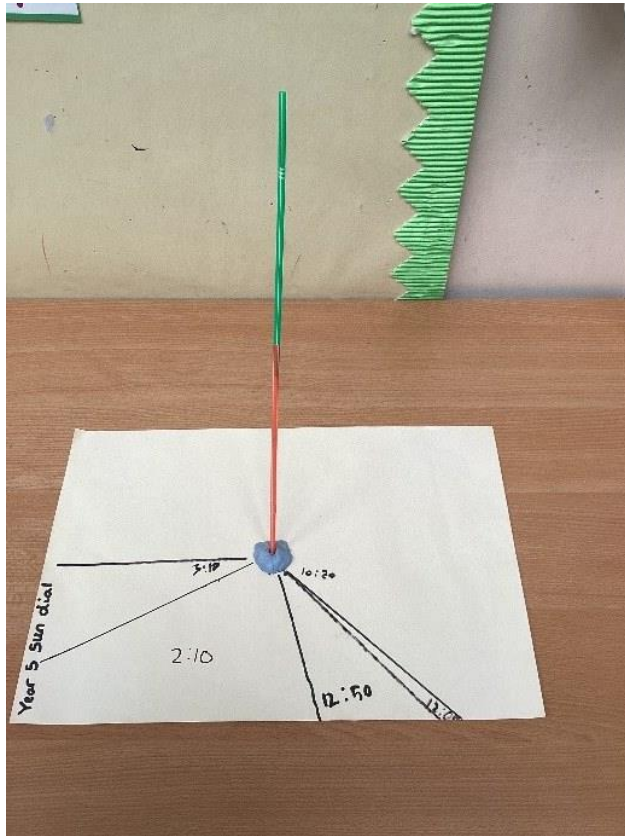


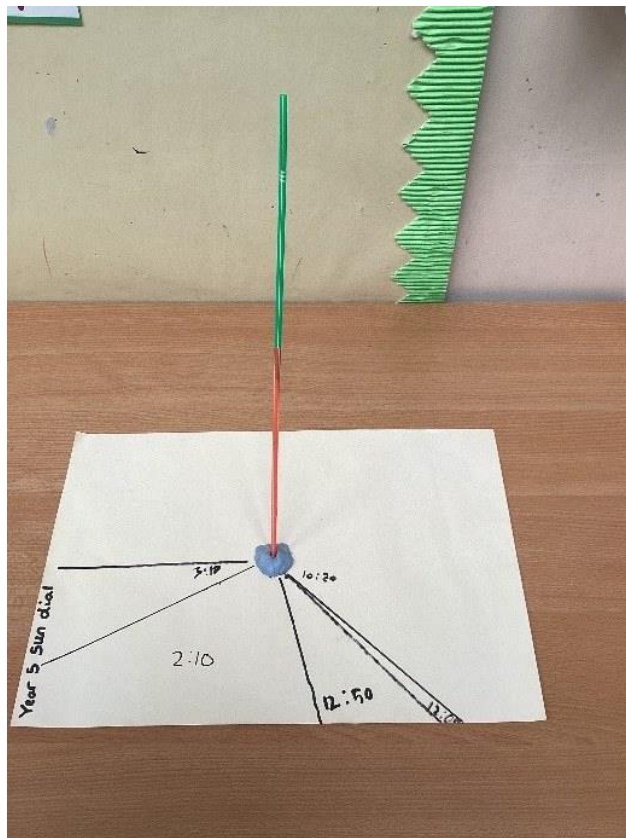
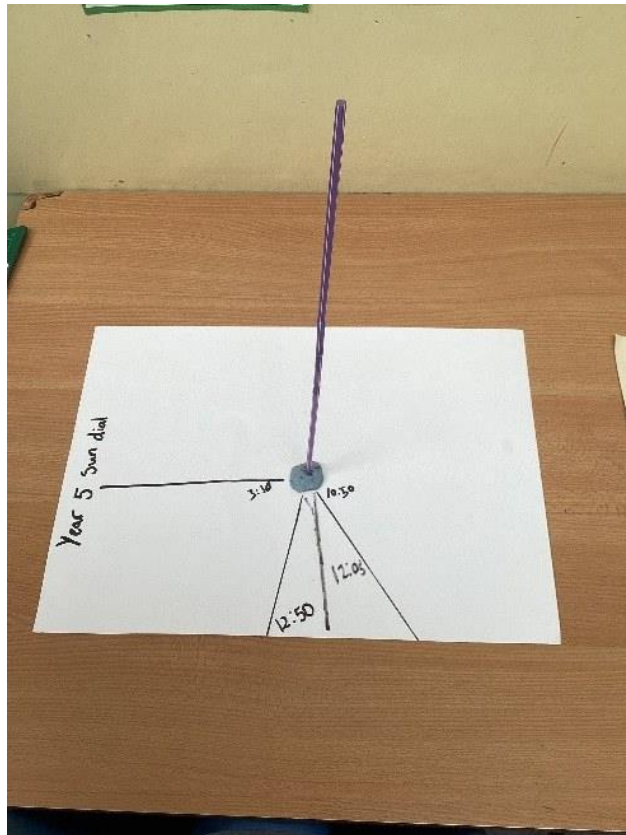
Elder Class (Year 5)



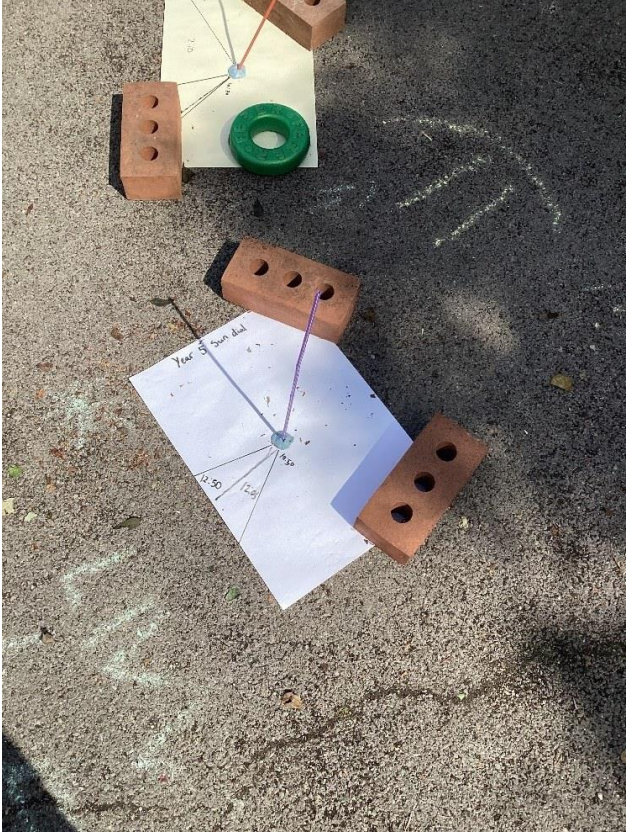












On Tuesday, 11th June, Year 5 had a wonderful trip to Cuckmere Haven!

The trip was planned to enrich our learning across two topics - "Why are Rivers Important?" and "What Lies Beneath Our Feet?" (all about the formation of the South Downs). During the day, we enjoyed a variety of activities including making field sketches of the River Cuckmere from the hill above, making sketches of the chalk cliffs of the Seven Sisters, doing a fact-finding quiz in the Seven Sisters visitor centre, a wildlife-spotting walk down through the river valley, collecting examples of chalk, flint and even fossils from the beach, and of course a close-up look at the river during our Kayaking activity (some children got closer than others!) Thank you to the parents who came along to help out on the day and a big well done to all the children who worked hard, behaved beautifully, and threw themselves into the trip (and the river) with so much enthusiasm.



























Oak Class (Year 6)











Art Week



This year our Art Week will be held on the week beginning **Monday, 24th June, 2024**. Our theme for this year is **'The Five Senses'**, inspired by last years 'Big Draw Festival'.

It will be a week full of inspiration, imagination and lots of creativity. The theme gives us an opportunity to focus on the way we experience, process and internalise the world through our senses, sharing this through our creativity. Being fully present in the 'moment' with our senses, means we are not worrying

about the past or fearing the future. We can be fully immersed in what is happening now, feel less stressed and feel more positive, because we feel we have more control over our thoughts. This positivity is infectious and a wonderful way to spread happiness amongst our peers, making us less susceptible to overwhelm.

We are looking to explore this through several different mediums, including music, clay work, and painting and possibly even dance.

We will host an exhibition of our work **on Friday, 12th July 3.00pm - 3.30pm and you are most welcome to attend.**

CALLING ALL PARENT/CARERS ARTISTS/DANCERS...

We would love to have some of our creative parents join us for some the week! If you have an artistic skill you would love to share with a class or the school please email Miss Patience via the School Office. We would love to have you involved!

Thank you,
Miss Patience
Year 4 Teacher
Art Subject Leader

[Reminder - Arbor - School Communication and Contacts](#)



We made the transition from Teachers2Parents to Arbor so that all emails and text messages from the school will go from the latter system. Thank you to everyone who has checked your personal information carefully to ensure we have up-to-date contact details, home addresses, medical information etc. Please ensure you keep this information up-to-date to ensure we are able to contact you in emergencies.

If you have any queries once you have logged in and checked your child's details, please do email me (head@westernroad.e-sussex.sch.uk). Thank you.

Reminder - Term 6 Lewes Foodbank Donations



Thank you so much for all the donations given for Lewes Foodbank so far this academic year.

We continue to support the Foodbank this term and Debbie Twitchen has asked that we focus on collecting tinned products: meat, fish, tomatoes, vegetables and pulses. They also ask that we donate children's drinks and snacks too.

Please do bring any donations to the School Office and we will arrange for a delivery at the end of this term.

Thank you in advance.

Reminder - Terms 5 and 6 After-School Clubs

	Club	Year Groups	Booking Details
Monday	Choir	Year 3 – Year 6 NO CHARGE	Ms Callow office@westernroad.e-sussex.sch.uk STARTING 22.04.2024
Tuesday	Gymnastics	EYFS – Year 6	Premier Sport (see attached flyer)
	Art Club	Year 1 – Year 6	Deb and Em info@deborahmanson.co.uk STARTING 23.04.2024
	Outdoor Project	Year 1 – Year 6	Outdoors Project (see attached flyer) NO CLUB 16.7.2024
	Lego Club	Year 3 – Year 6	Mr Young (see attached flyer)
Wednesday	Archery	Year 1 – Year 6	Premier Sport (see attached flyer)
	Sama Karate	EYFS – Year 6	Sama Karate (see attached flyer)
	Board Games	Year 3 – Year 6 NO CHARGE	Mrs Johnson office@westernroad.e-sussex.sch.uk
Thursday	Albion In The Community	Year 1 – Year 6	Albion In The Community (see attached flyer) www.bookings.albioninthecommunity.org.uk/activities ^[1] ^[2]
	Street Dance	Year 1 – Year 6	CC Dance (see attached flyer) https://cc-dance.co.uk/ ^[3] ^[4] dance.co.uk/ ^[5] ^[6]
	Sewing Club	Year 3 – Year 6	Mrs Mannering office@westernroad.e-sussex.sch.uk
	Dungeons and Dragons	Year 5 – Year 6 NO CHARGE	Mr Young (see attached flyer) office@westernroad.e-sussex.sch.uk

1 - [1] <http://www.bookings.albioninthecommunity.org.uk/activities> [2] <http://www.bookings.albioninthecommunity.org.uk/activities> [3] <https://cc-dance.co.uk/> [4] <https://cc-dance.co.uk/> [5] <https://cc-dance.co.uk/> [6] <https://cc-dance.co.uk/>

Please note, all clubs will start week commencing 15.04.2024 and end in the week commencing 15.07.2024 unless otherwise stated above.

There will be no clubs in the final week of Term 6 (22.07.2024 and 23.07.2024).

If your child will be collected by a different adult from an after-school club, please do inform the club provider directly, for example Premier Sports or Albion In The Community. Please contact the School Office only if your child attends Choir Club (run by Miss Callow), Lego Club (run by Mr Young), Games Club (run by Mrs Johnson) or Sewing Club (run by Mrs Mannering).

Reminder - school uniform



Western Road Community Primary School's Uniform consists of:

- Navy school fleece with school logo (optional but these are very warm and ideal for Winter and Spring)
- *Navy school jumper with or without school logo or navy or mid-grey cardigan*
- White shirt/blouse with long or short sleeves with or without logo or
- White or navy blue polo shirt with or without school logo
- Mid-grey or navy trousers or smart shorts, or
- Mid-grey or navy skirts (or skorts), pinafore dresses or school summer dresses (blue/white check)
- White/navy/grey socks or tights
- ***Plain black or navy school shoes (or plain black or navy trainers with no logos); plain sandals in the Summer terms only.***
- Plain hair accessories (optional and in school colours preferably). Long hair (past shoulder length) must be tied back.

PE kit:

- White T-shirt or polo shirt with school logo (or plain)
- Grey or navy shorts or jogging bottoms (plain with no logos)
- Trainers or plimsolls

Please note, hoodies and jewellery (apart from a wristwatch when appropriate or stud earrings that can be taken out for PE) are not part of the school uniform and must not be worn in school.

The school also has school caps, rucksacks and book bags available. Please ensure all items of clothing are named including shoes or trainers.

Navy blue polo shirts, fleeces and sweatshirts with the school logo on are all available from Intersport http://www.gameforlife.co.uk/section.php/781/1/western_road_cp_school.

Second-hand items are regularly available at low cost at school fairs and events.

Reminder - Message from the Bursar, Sarah Clifford

Please ensure your ParentPay accounts for dinner money are cleared at the end of each week, or (ideally) are in credit by a small amount. **School dinners cost £2.85 per day for children in Years 3 - 6.**

Children under 5 are entitled to free school milk each day, given at morning snack time (this is in addition to milk given to children who have school lunches). If you would like your child to receive milk, either as they are under 5 or at an additional cost, please do visit <https://www.coolmilk.com/parents/> for more information and to register your child.

If you think your child might be entitled to **Free School Meals** (regardless of their age) through the **Pupil Premium Grant**, please do look at <https://www.eastsussex.gov.uk/education-learning/schools/school-life/school-meals/free-school-meals> for more information. If your child is entitled to Free School Meals and/or the Pupil Premium Grant, the school will receive additional funding to support them with their learning and enrichment activities.

We have had some money handed in that has been lost on the playground. Please ensure children do not bring cash into school I appreciate it is Make The Rules Day on Friday but collection boxes will be available at the gates, or parents can use ParentPay).

Please do speak with me, Sarah Clifford, or email me bursar@westernroad.e-sussex.sch.uk if you have any queries. Thank you.

Reminder - Bikes and scooters



Please ensure your child collects their bikes/scooters at the end of each school day. There are a number of bikes and scooters that have been in the bike shed for some time and I'm sure they are missed at home! If you would like to check the bike shed for any missing bike/scooter, please do speak with a member of staff at the white gate at drop-off or pick-up.

Please also be mindful if you or your child cycles/scoots on the field. There was a very unfortunate incident last week where a child accidentally rode into another child, knocking them over. Please remind your child to look where they are riding/scooting and to be respectful of others. Thank you.

Reminder - football kits (Thursdays)



Children who attend Albion In The Community after-school club on Thursdays should come to school in their usual school uniform and school shoes/plain black trainers. The football coaches arrive for 3pm to supervise the children getting changed into their kits before the club starts at 3.15pm. Please ensure all kit (including boots, shin pads etc) are clearly named. Thank you.

Safeguarding Reminder



At Western Road Community Primary, all staff take safeguarding children very seriously. All staff have been trained in Safeguarding and Child Protection. If you have any concerns about a child's well-being, bullying or e-safety, please contact the Designated Teachers for Child Protection: Mrs Bedford, Mrs Hamilton or Mrs Wooler.

Health Service Reminder



We are pleased to be part of East Sussex Health Group. East Sussex Schools Health Service is a team of public health practitioners, led by school nurses who work with children, young people aged between four and 19 and their families. **They provide support and advice for a variety of physical, sexual and emotional health and wellbeing issues, and will refer to specialised services when needed.**

For full details about the service they offer please visit the website: www.kentcht.nhs.uk/service/school-health/school-health-service-east-sussex/

How can you use the service?

- Contact the School Health One Point on **0300 123 4062**, available Monday to Friday from 8:30am to 5pm
- Make a referral online at www.kentcht.nhs.uk/forms/school-health-service-east-sussex-referral-form/ • Visit the School Health virtual drop-in, Mondays and Thursdays 10am to 3pm and 6pm to 9pm at <https://nhs.vc/east-sussex-school-health> They can offer support and advice to children, young people and families virtually, face to face or via the phone as well as brief interventions and packages of care where appropriate.

Western Road Community Primary School



Southover High Street,

Lewes,

East Sussex

BN7 1JB

01273 473013

<http://www.westernroad.e-sussex.sch.uk>

Headteacher: Irèna Wooler

Deputy Headteacher: Rea Hamilton

SENDCO: Kerry Bedford

Western Road Community Primary School is a nurturing, creative community where everyone can flourish.